

LEOPOLD gallery
Established 1991

■ Portfolio of Select Collections and Projects

corporate **COLLECTIONS**

H&R Block



Paul Dorrell's leadership on our project resulted in a balanced and highly inspirational art program. His passion for art, sense of fun and high energy are contagious!

Karen Orosco, VP of Technology
H&R Block, Kansas City, MO



public COLLECTIONS

Kansas State University
School of Leadership Studies



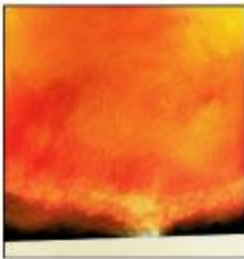
Paul's knowledge of art, his inspired concepts, and sensitivity to our budget were indispensable in creating a world-class collection that inspires and challenges all who experience it.

Dr. Susan M. Scott
Founding Director



corporate **COLLECTIONS**

BKD LLP Headquarters



We hired Paul as art advisor for our new headquarters. He delivered a brilliant collection on time and on budget. Everyone, from our staff to the community, is ecstatic with the result.



Betty Hunter
Controller, National Office



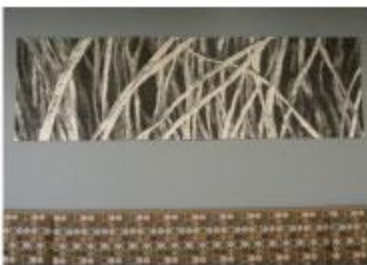
corporate **COLLECTIONS**

BKD LLP Kansas City



Our job is to match our clients' passions with works they fall in love with, finding them the perfect artist every time. It doesn't matter what their budget is, what matters is our devotion.

Paul Dorrell
Leopold Founder



select **INSTALLATIONS**

Sculpture



Sprint Center



Children's Campus of Kansas City



Bart Cohen Memorial



City of Overland Park



H&R Block Collection



City of Olathe

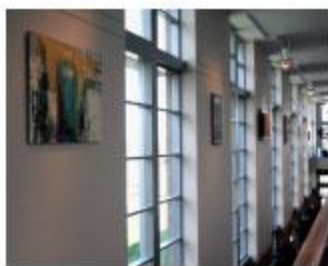
corporate **COLLECTIONS**

Overland Park Convention Center



Leopold's acquisition of art for our convention center was flawless, from master plan to installation. Paul Dorrell was careful to be inclusive, respectful and always original.

Julie Bilyea
Public Art Coordinator
City of Overland Park, KS



Health Care COLLECTIONS

St. Luke's Hospital



Paul Dorrell led the Hospital through an exciting selection process which yielded a dazzling array of works that delights staff, patients and visitors.

Mark Litzler, Executive Director
Saint Luke's Foundation
Kansas City, MO



Health Care **COLLECTIONS**

University of Kansas Hospital



Leopold's selection of artists, participation in designs, and oversight of complex installations helped give our Advanced Center for Heart Care a rare and distinct visual presence.

Jon Jackson, Senior Vice President,
System Integration,
University of Kansas Hospital, Kansas City, KS



public **COLLECTIONS**

Monuments



D-Day National Memorial
Jim Brothers
Bedford, Virginia

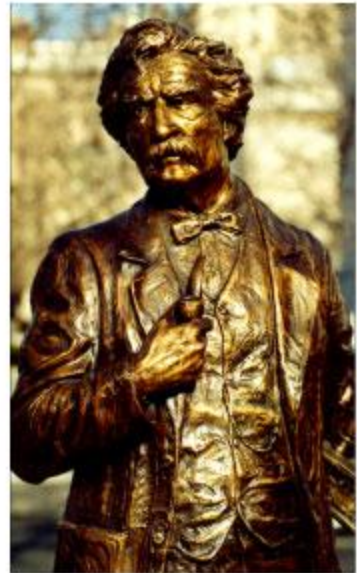
With professionalism, wise counsel, and dedication, Leopold helped ensure the mastery of our project to an international audience, with world class-standards.

William McIntosh, President
National D-Day Memorial, Bedford, VA

Dwight D. Eisenhower Memorial
Jim Brothers
Capital Building, Washington, D.C.



Mark Twain Memorial
Jim Brothers
Hartford, Connecticut





A commitment to fostering sophistication and creative excellence in public spaces is at the heart of every Leopold Art Program.



private **COLLECTIONS**



Paul's vision and passion reflect his dedication to a concept he calls the "regional renaissance."

435 South Magazine



LEOPOLDgallery

Founded in 1991



Leopold Gallery was founded in 1991 by Paul Dorrell, who moved back to Kansas City from Connecticut—where he'd worked at Hill-Stead Museum—to represent regional artists. Our clients include H&R Black, The Mayo Clinic, BKD LLP, St. Luke's Hospital, the National D-Day Memorial, University of Kansas Hospital, and 100s of others—private, corporate and civic.

Our approach to clients is inclusive, impassioned, and unique.

We don't just sell great art, we create enduring environments that inspire and challenge all who encounter them.



LEOPOLDgallery | 324 WEST 63RD STREET | KANSAS CITY, MO 64113 | P 816 333 3111 | F 816 333 3616 | LEOPOLDgallery.com



In the field of art consultation, Leopold Gallery, LLP stands out as a pioneer. Since 1991, we have provided expert advice on the acquisition of artwork for corporations and private collectors.

We're known for our comprehensive knowledge of the regional art market. Individualized art programs are developed around five basic tenets: **design, sophistication, community involvement, budget, and inspiration.**

Paul Dorrell specializes in developing aesthetically appropriate art programs for each client that endure, and increase in value.

Create an Engaging Art Program by Unifying New Acquisitions with Existing Works

Paul has a special perspective on how to expand, reposition or simply refresh an existing collection. Corporate clients and private collectors often look to us for guidance in these areas.

We find that, through creative redeployment of existing pieces in combination with new acquisitions, a highly effective result can be achieved at reasonable cost. Equally important is the commissioning of pieces that truly inspire each client.

Our Strategy

Assessment and Appraisal

A first step in every consultation is to analyze the client's goals: budgets, interior characteristics, aesthetic guidelines, and potential works that will be relevant to the firm or institution. Existing collections are inventoried and appraised. We highlight the strong pieces in an existing collection and determine the need for further acquisitions or commissions.

Acquisition Strategy

Our experience and expertise give us the ability to meet the needs of budget and image. By developing a conceptual plan at the outset, we provide the tools to help our clients define the quantity and quality criteria for new purchases. These tools also relate to the placement of existing works.

Installation

We place great importance on scale and the relationship of the art to the architecture. Through skillful placement and themed concepts, a collection is given its unique presence. Our location plans are always coordinated with the architect and client. We also handle framing and related details.

Collection Management

Aside from the issue of time savings and cost efficiency, our collection management program provides clients with a database catalogue of artwork, guidelines for care and maintenance, and ongoing recommendations.



paul **DORRELL**

Art Advisory Services Client List

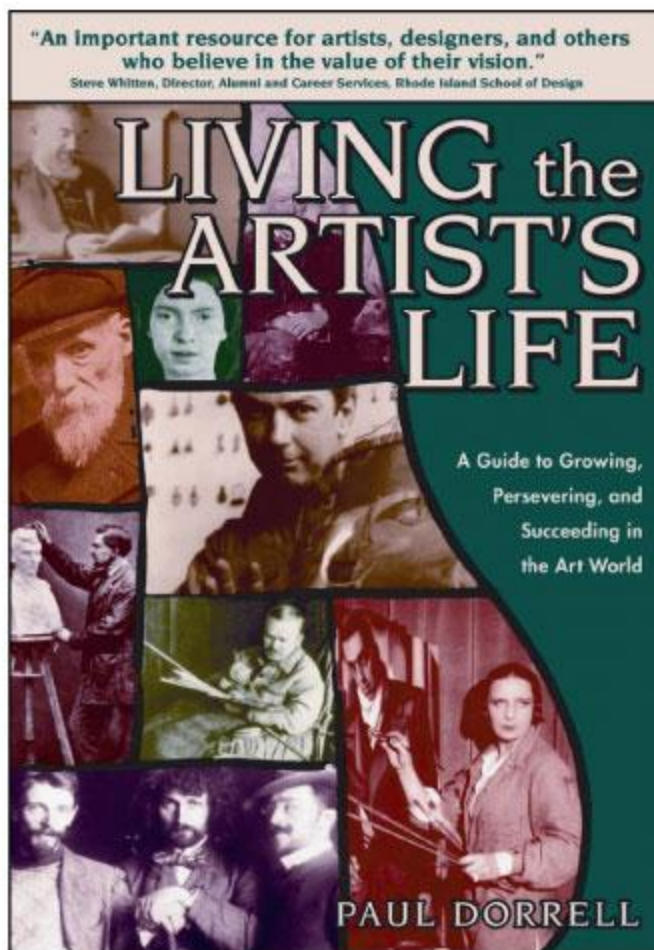
H&R Block World Headquarters; Kansas City, MO
University of Kansas Hospital, Kansas City, KS
BKD LLP, Kansas City, MO
TVS Architects, Atlanta, GA
The National D-Day Memorial; Bedford, VA
A. Zahner Co., Kansas City, MO
DeBruce Grain; Kansas City, MO
General Electric Aircraft Engines; Cincinnati, OH
Ochner Hare & Hare Architects, Kansas City, MO
Sprint Center; Kansas City, MO
Dwight D. Eisenhower Monument; Washington, DC
Veterans of Foreign Wars, Washington, DC
Kansas State University School of Leadership Studies
2007 Kansas Inaugural
The Civilian Conservation Corps, Los Angeles, CA
Dickson Architects, Roanoke, VA
Siegfried Law Firm, Kansas City, MO
PB&J Restaurant Group, Kansas City, MO
Winbury Group, Kansas City, MO
Davidson Hotels, Nashville, TN
Ritchie Exploration, Wichita, KS
BKD LLP, Springfield, MO

Warner Brothers; Los Angeles, CA
St. Luke's Hospital, Kansas City, MO
Lewis Rice Fingersh Law Firm; Kansas City, MO
Overland Park Convention Center; OP, KS
DLR Group, Omaha, NE
Russell Stover Candies; Kansas City, MO
Steven Spielberg; Los Angeles, CA
Kansas City Zoo
Charles Schulz; Santa Rosa, CA
Emprise Bank; Wichita, KS
Lockton Insurance; Kansas City, MO
The Mayo Clinic; Rochester, MN
The Kauffman Foundation; Kansas City, MO
Red Development, Kansas City, MO
Citizens Bank, Overland Park, KS
American Century Investments, KC, MO
Mediflex Corp., Leawood, KS
American Royal, Kansas City, MO
Loewen & Gunther Design, Phoenix, AZ
Hunkeler Eye Institute, Kansas City, MO
The Mark Twain Monument; Hartford, CT
Kansas City Royals



paul **DORRELL**

Paul Dorrell's First Book Tour



Revision of *Living the Artist's Life*

Paul Dorrell's acclaimed guidebook for artists, *Living the Artist's Life*, first appeared in 2005 and has gone through three printings. Paul has spoken at such lauded venues as the Art Students League of New York and the Rhode Island School of Design, and has been interviewed on dozens of National Public Radio affiliates.

He's currently updating the book, with a revised version due out in late 2011. After all, we've accomplished a great deal since 2005.

New York, NY, Art Students League of New York
Coral Gables, FL (Miami Area), Books & Books
Santa Monica, CA, 18th Street Cultural Center
Tempe, AZ (Phoenix area), Changing Hands Bookstore
Westwood, CA (Los Angeles area), Barnes & Noble
Corte Madera, CA (San Francisco area), Book Passage
Seattle, WA, University Village Barnes & Noble
Providence, RI, Rhode Island School of Design
Boulder, CO, Boulder Bookstore
Oxford, MS, Square Books
New Haven, CT, Yale Bookstore
Chicago, IL, Chicago Artists' Coalition
Austin, TX, Dougherty Arts Center
New Orleans, LA, Garden District Bookshop
Palo Alto, CA, Pacific Art League
Orlando, FL, Barnes & Noble
Jacksonville, FL, Barnes & Noble
Tampa, FL, Inkwood Books
Naples, FL, Barnes & Noble
Fort Lauderdale, FL, Barnes & Noble
Long Beach, NY, Sponsor: Artists in Partnership of Long Island
White Plains, NY, Westchester Arts Council
New Milford, NJ, Art Center of Northern New Jersey
Jersey City, NJ, Jersey City Museum
San Diego, CA, San Diego Watercolor Society
San Francisco, CA, SomArts
Ashland, OR, Ashland Public Library
Portland, OR, Portland Arts Center
Edmonds, WA, Edmonds Conference Center
Colorado Springs, CO, Barnes & Noble
Denver, CO, Meininger's Art Supply
Fort Collins, CO, Barnes & Noble
Boulder, CO, Boulder County Arts Alliance
Cincinnati, OH, Barnes & Noble
Louisville, KY, Barnes & Noble
Paducah, KY, Lowertown Arts District
Santa Fe, NM, Borders Books
Albuquerque, NM, Barnes & Noble
Memphis, TN, Davis-Kidde
Mobile, AL (Eastern Shore), Barnes & Noble
Jackson, MS, Lemuria Bookstore
Little Rock, AR, Barnes & Noble
Encinitas, CA (San Diego area), Barnes & Noble
Tucson, AZ, Barnes & Noble
Santa Barbara, CA, Borders Books
Los Angeles, CA, California State University Northridge
Pasadena, CA, Borders Books
St. Louis, MO, Washington University
Atlanta, GA, Borders Books
Atlanta, GA, College Art Association Convention
Athens, GA, Barnes & Noble
Charleston, SC (Mt. Pleasant area), Barnes & Noble
Raleigh, NC, Borders
Chapel Hill, NC, Borders
Charlotte, NC, Borders
Nashville, TN, Borders Books
Minneapolis, MN, Barnes & Noble Store in Edina
Milwaukee, WI, Borders Books
Naperville, IL, Barnes & Noble
Chicago, IL, Webster Place Barnes & Noble
Skokie, IL, Old Orchard Barnes & Noble
Ames, IA, Iowa State University, College of Design
Warwick, RI (Providence area), Barnes & Noble
Hartford, CT, Tunxis Community College
Farmington, CT (Hartford Area), Borders Books
Tulsa, OK, Steve's Books
Fort Worth, TX, Barnes & Noble
Houston, TX, Barnes & Noble
San Antonio, TX, Borders Books
Dallas, TX, Barnes & Noble
Indianapolis, IN, Barnes & Noble
Columbus, OH, Barnes & Noble

LEOPOLDgallery CHARITABLE FOUNDATION



The **Leopold Gallery Charitable Foundation** provides scholarships for students throughout the Kansas City area. It also funds art programs at Paseo Academy, Lincoln Prep Academy, and Sumner Academy. 100% of all donations go to these worthy programs. If desired, a donation can be made for a specific school.

Our foundation is sponsored by the Greater Kansas City Community Foundation. All donations are tax-deductible, for which patrons receive appropriate documentation.



The foundation also funds field trips for these deserving students. The trips serve the purpose of art instruction, as well as guidance on gaining entry to area universities.



Paul has been our strongest source of community support and professional mentoring. He has a genuine concern for our students and strives to make a real difference in their lives.

Pamela Sahl
Department Chair
Paseo Academy of Fine and Performing Arts

Paul is a welcome presence on our campus, showing a deep concern for students who are economically disadvantaged, yet who have a wealth of potential in the arts. He labors to help them achieve their dreams.

Mary Ann Sit
Art Instructor
Sumner Academy of Arts and Science